



# Solar Profile Catalog



Dem  
Steel

[www.demsteel.com](http://www.demsteel.com)



# Environmentally Friendly Steel Structures!





Dem Steel is a brand within Demonte Prefabrik that has adopted a mission of providing comprehensive solutions in the field of steel and light steel structures. Dem Steel offers domestic and international services with expert team, prioritizing customer satisfaction through a professional approach and experience. The company offers quality products by cooperating with leading raw material suppliers in the sector. Its assembly and disassembly operations, indoor installations, painting operations, after-sales services, and customer-oriented approach contribute to its strong position in the sector.



Dem  
Steel



Demonte  
Prefabrik

# Durable and Economical Solar Construction Solutions

Solar construction systems used in solar energy plants play a critical role as the supporting structural elements for panels. The design of these systems is meticulously carried out, considering the static characteristics of the installation area. During the project phase, profiles are designed to accommodate various angles and positions of the panels.

These profiles are produced through a cold-forming method, where metal sheets are bent and perforated along an extensive roll-forming line. The strength, longevity, and ease of installation of these profiles are crucial for the efficiency of the system. Furthermore, the structure's resistance to environmental and atmospheric conditions is essential to ensure its stability over many years.

Thus, the profiles are subjected to hot-dip galvanization according to EN 1461 standards. This process enhances the surface resistance of the steel, providing effective protection against the corrosive effects of rain, snow, and moisture. The quality of the galvanization process is determined by the formation of a uniform, well-adhered to surface, non-porous coating that is resistant to impact.

## Why Dem Steel Solar System Profiles?

Dem Steel is an experienced and reliable partner in solar system profiles. We stand out in the industry with our emphasis on quality, durability, and customer satisfaction. Our long-lasting, durable, and environmentally friendly products make us a trusted partner for your projects. To achieve the best results in your solar energy projects and make a difference in your renewable energy solutions, choose Dem Steel.

At Dem Steel, we offer the durable, efficient, and environmentally friendly solutions you need for your solar energy projects. Use our solar system profiles to harness your energy most efficiently and invest in the energy of the future today. Contact us, and let's bring the best solutions for your projects to life together.





# Solar Construction Solutions Powering Sustainable Energy



## The Power of Renewable Energy

Solar energy, recognized as the energy of the future, is a sustainable and environmentally friendly energy source. Solar system profiles play a critical role in the installation of solar panels, maximizing energy efficiency. At Dem Steel, we help you optimize the performance of your solar energy systems with our high-quality solar system profiles made from premium materials.

## Durable and Reliable Solutions

Our solar system profiles demonstrate high resistance to harsh weather conditions and external factors. Supported by corrosion-resistant coatings, our profiles provide trouble-free service for years. Steel, as a high-strength material, can carry heavy loads, ensuring the safe installation of your solar panels. Dem Steel solar system profiles offer long-lasting use and are resistant to challenging environmental conditions.

## Easy Installation and Flexibility

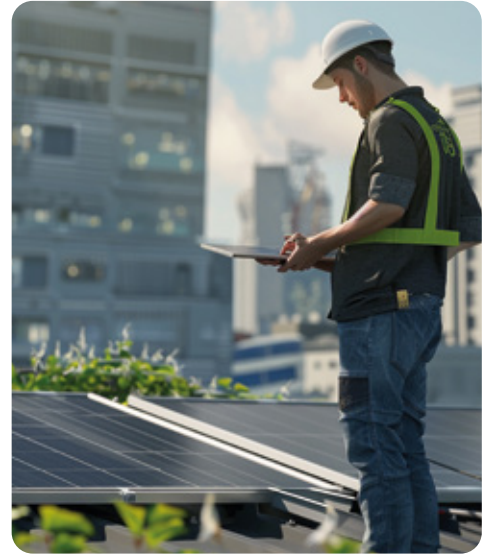
Dem Steel solar system profiles stand out with their ease of assembly and disassembly. Their modular structure adapts to different sizes and types of solar panels, providing customized solutions for projects. Their lightweight design makes transportation and installation easier, reducing installation time and labor costs.





### High Performance and Efficiency

Our steel solar system profiles allow the optimal positioning of solar panels, maximizing sunlight exposure and enhancing energy efficiency. Their robust structure ensures that the panels remain stable, maintaining their performance. With our optimized design, we help you achieve high performance in your projects by maximizing energy efficiency.



## Solar Construction Solutions for Sustainable Energy



### Environmentally Friendly Production

At Dem Steel, we prioritize environmental sensitivity in our production processes. By using recyclable materials, we contribute to the preservation of natural resources. Our solar system profiles represent an environmentally friendly approach not only in energy production but also during the manufacturing process. As a recyclable material, steel offers a sustainable solution with minimal environmental impact during production.

### Superior Performance and Longevity

Thanks to their long-lasting and durable structure, our solar system profiles reduce maintenance costs and shorten the return on investment period. With high performance and longevity, they offer an economical solution. This allows you to minimize your investment costs while achieving maximum efficiency. Dem Steel products provide cost-effective solutions with their high performance and durability.



### Product Variety

Our solar system profiles offer a wide range of products. With different sizes and types of profiles, we provide options suitable for your projects with various installation solutions. With our high-quality products, we ensure that you achieve maximum efficiency from solar energy. Their robust structure and aesthetic appearance add value to your projects.





# Invest in the Future with Solar Construction Solutions!



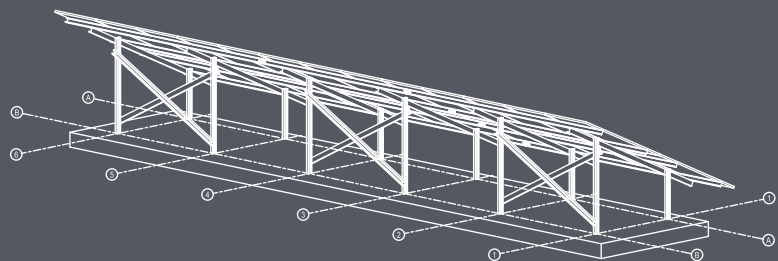
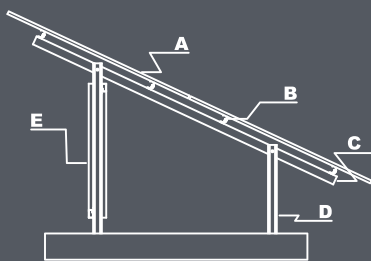


## P System

P System is an ideal ground-mounting solution for large-scale commercial and public projects conducted in rugged and challenging terrains. This system provides high efficiency and reliability, especially in irregular terrain conditions, enabling the successful implementation of projects even in the most demanding areas.

One of the main advantages of the P System is that it eliminates the need for additional excavation work, thanks to the use of driven piles. This feature provides significant savings in both labor and time. Additionally, the pile driving process can be completed in less than 3 minutes, offering a notable cost advantage for large projects.

The double-post system allows easy access around and beneath the modules, making maintenance and inspection tasks extremely practical. This structure offers maximum accessibility during both installation and maintenance processes. The P System can also be adapted to a single-post system for narrower and more compact structures, offering flexible solutions to meet project requirements.



A - Pv Modules    B - Assembly Profiles    C - Purlin    D - Piling Post    E - Wind Bracing



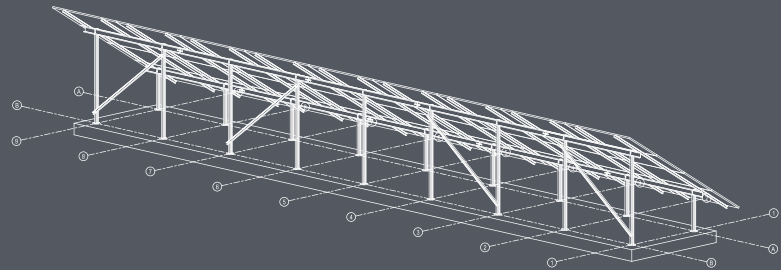
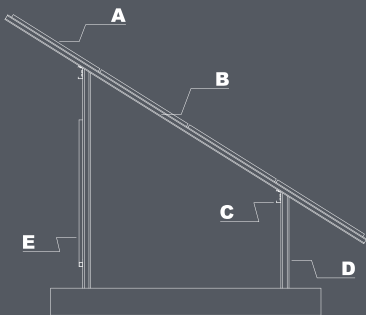
# P System Construction Drawings



## B System

B System stands out as an innovative solution that maximizes installation speed and efficiency. Utilizing driven piles as the main supports, this system delivers superior performance in terms of strength and durability. One of the most distinctive features of the B System is its specially angled bent upper beams. This design not only accelerates the installation process but also enhances the overall stability of the system.

The B System seamlessly adapts to various foundation structures, allowing projects to accommodate different ground conditions. Panels can be mounted either horizontally or vertically, providing a flexible structure according to project needs. Moreover, when compared to similar systems on the market, the B System is one of the most economical options in terms of steel usage. This feature ensures fast results and optimized costs, particularly for large-scale projects.



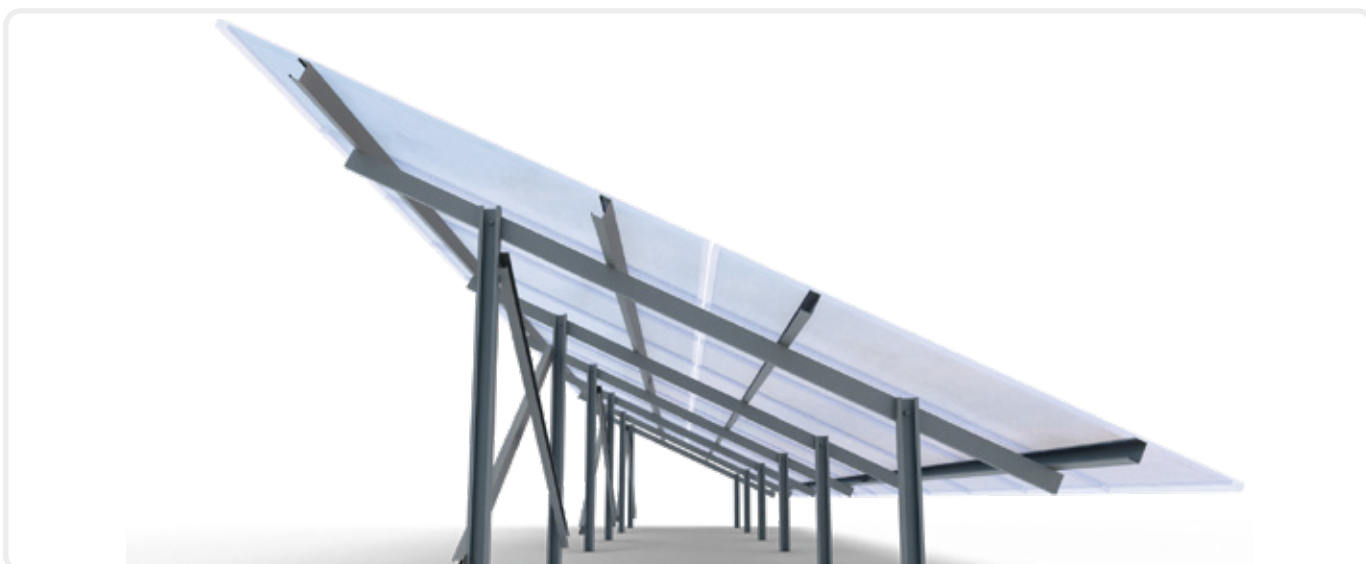
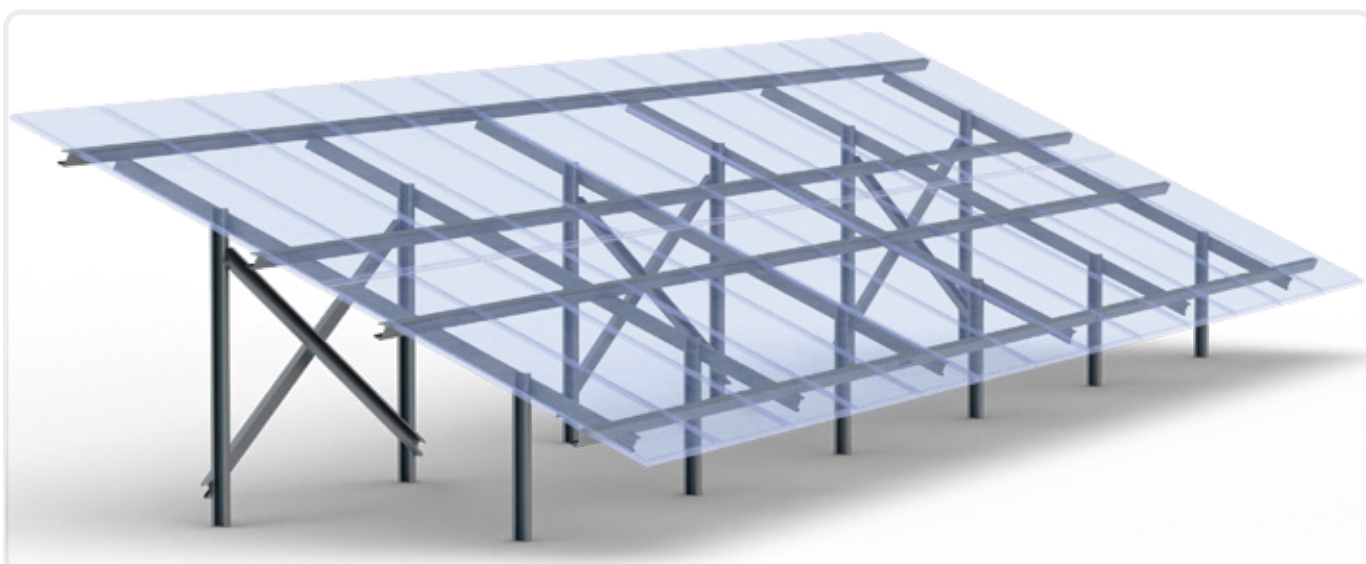
A - Pv Modules    B - Assembly Profiles    C - Purlin    D - Piling Post    E - Wind Bracing

While the P and B Systems offer similar solutions in terms of functionality, they differ in installation and usage practices. Both systems provide economical solutions with quick assembly, low labor requirements, and cost advantages. They deliver high performance and durability in large projects, ensuring a long-term return on investment.





## B System Construction Drawings



## BESPOKE System

The BESPOKE System offers a simple and economical solution designed to provide both parking spaces and solar energy generation. This system is designed with options for single-row and double-row parking spaces, and it can easily adapt to most module types, orientations, and tilts. The wide spacing between the foundations reduces costs, speeding up the installation process and making it more efficient.

BESPOKE System makes the most of existing parking areas, presenting an eco-friendly appearance with its aerodynamic design. Additionally, this system can also be used as an electric vehicle charging station, providing a significant advantage in meeting future energy needs. The BESPOKE System can be adapted to specific vehicle segments and parking space sizes based on customer demands.

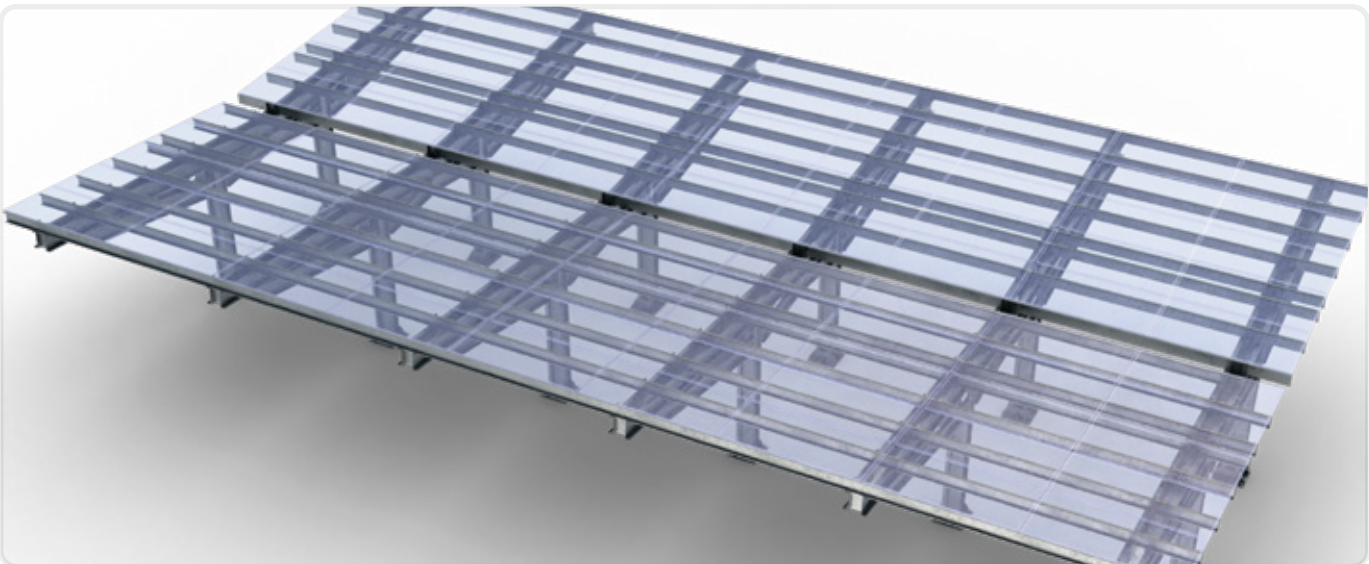
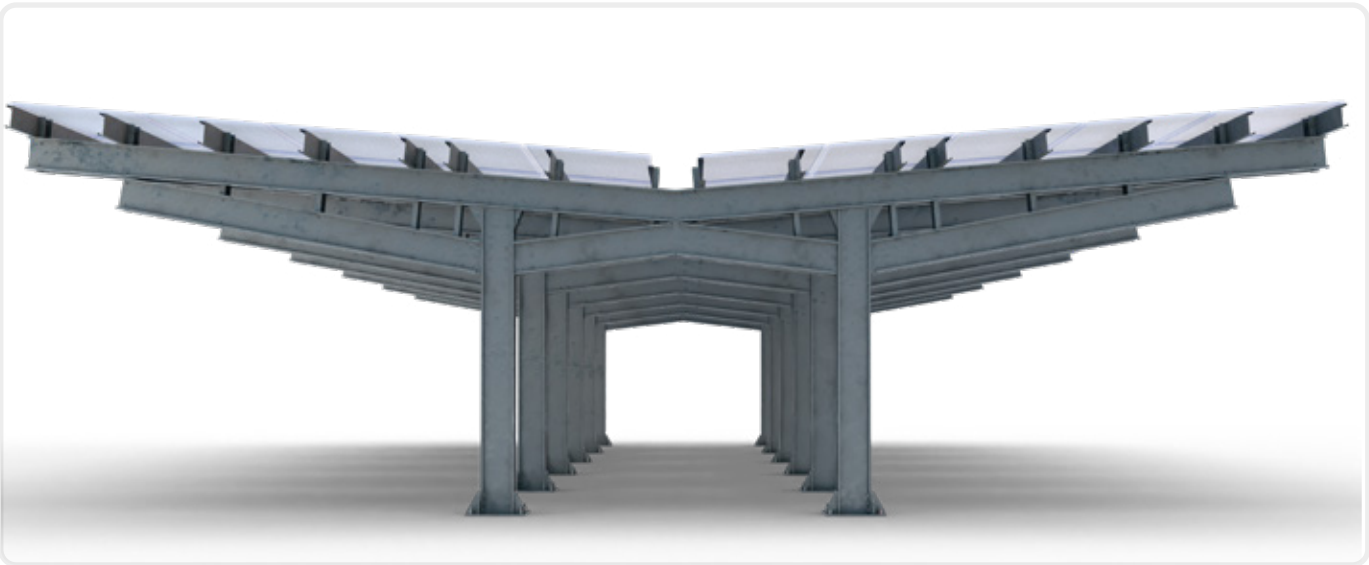
Furthermore, the BESPOKE System can offer eco-friendly features such as partial waterproofing and rainwater collection and recovery. After production, the system components are coated with hot-dip galvanization, pre-galvanization, powder coating, or wet painting, ensuring effective protection against corrosion. With its high engineering design, this system provides ease of installation and cost advantages. The BESPOKE System can be entirely tailored and manufactured according to customer needs, offering customized solutions for every project.





# BESPOKE System

## Construction Drawings



www.demsteel.com  
info@demsteel.com



**Gebze Factory**

Denizli Mah. Gazi Mustafa Kemal Cad.  
No: 200 **Gebze/Kocaeli/TÜRKİYE**  
+90 262 502 10 99

**Tuzla Factory**

Orhanlı Mah. Fettah Başaran Cad.  
No: 103/1 **Tuzla/İstanbul/TÜRKİYE**  
+90 216 394 34 54

Dem Steel



Dem  
Steel



Demonte  
Prefabrik